

Cravesone upgrades

How to install the Full size SD card adapter and Stainless steel metal cover for the Nokia N810

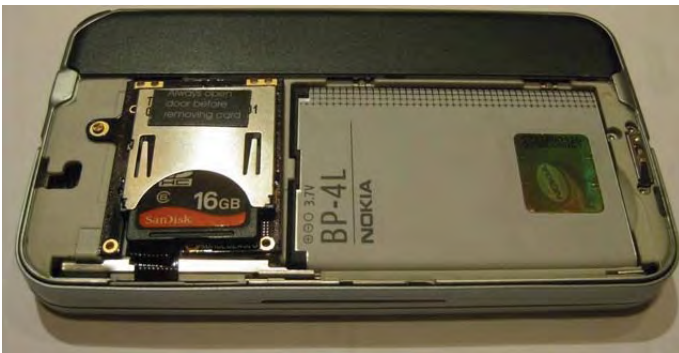
Thank you for purchasing the N180 SD card adapter.



Kit includes:

- 1 Adapter with Mini SD connector
- 1 Screw
- 1 Reminder label
- 1 Torx screw Driver
- 1 Philips screw driver
- 1 stainless steel or black metal replacement cover
- This installation sheet

Before you start the installation you can check the adapter in a computer using a Mini SD to SD adapter. Insert the full-size card in the new adapter. Insert the mini-SD adapter end into the Mini-SD to Full-Size adapter. Insert the Mini-SD to Full-Size adapter into a card reader or a computer SD slot. It should work just as if it was not in any adapters. If your computer has a mini SD slot on it then you will not need the Mini-SD to Full-Size adapter. If all is OK then you can proceed with the installation. The card can also be tested in the tablet the same way before the installation but I recommend using something else such as a card reader. Each card is tested before it is shipped.



This is the finished installation of the adapter with the metal cover removed.



Cover Installed with the adapter.

1. Remove the battery from the tablet and remove any Mini SD cards from the tablet.
2. Turn the tablet up side down on a towel or something soft to prevent scratching of the front plate.

3. Take the adapter out of the package and you will notice the black flex cable is per-folded in many places. These folds are very important so do not straighten them out. It is OK if they straighten while installing the adapter but they will have to be refolded the same way when the installation is completed. These folds allow the door over the Mini SD slot to close as tight as possible so the kick stand does not hit it.



4. Also note on the back of one side of the adapter a red piece of double sided stick tape. This tape holds the adapter on one side to keep it from moving. Together with the included screw the adapter is steady. Do not remove the red none-stick on the tape until ready to install the adapter.
5. There are 2 screws in the tablet that holds the front and back of the main body together. The screw farthest away from the battery will have to be removed. Use the blue handle screwdriver to do this. Do not remove the screw closest to the battery. The tablet will not come apart if you only remove the screw needed to install the adapter. Store the screw you removed in a safe place. Re-install it if the tablet ever needs to go out for repair, also remove the adapter in this case.



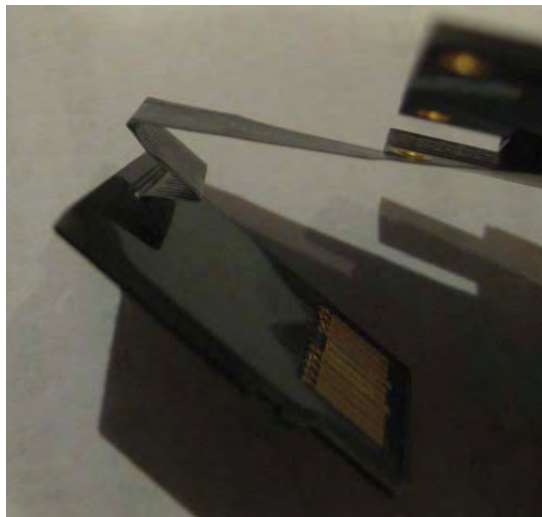
6. Install the Mini SD connector in the mini SD slot first. To do this with the cable connected to it you will have to pull the door all the way until it stops and bend it down then insert the Mini SD connector with the cable hanging out. Insert it the same way you would a mini SD card. It should click in the same way as the card usually does. **Push in to insert until the click push in again to remove it.** The gold contacts should face away from the screen. **Do not pull by black cable.**



7. Move the black flex cable to the back of the mini SD door but be very careful not to crimp it in any way. We need it to stay flat.
8. The first folds are on the SD connector, this allow the cable to fold a little inside the slot so the door can close completely.



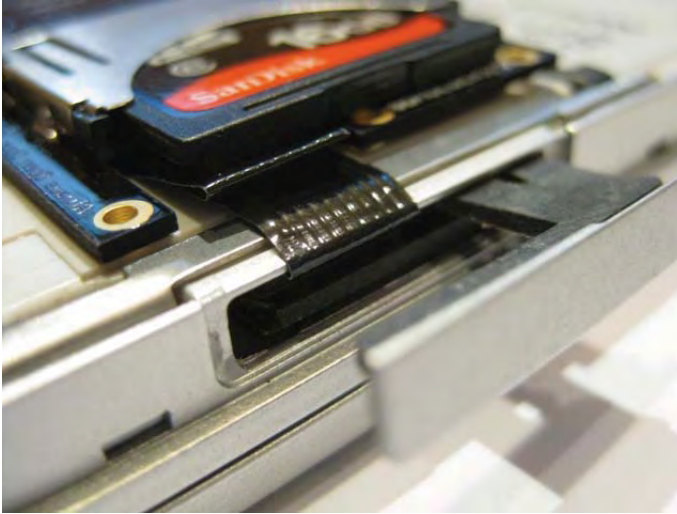
9. The next fold is very sharp around the edge of the mini SD slot onto the back of the tablet. This fold is also very important since it must be exact and sharp so it fits right against the edge of the tablet when it wraps around into the back cover area. If this fold is too large it will push against the Mini SD slot cover. If it is too small it will not let the edge on the slot cover to go into the slot and this will also make a gap in the slot cover when it closes. If this happens the stand will hit the slot cover. The cable can be re-folded if this is the case.



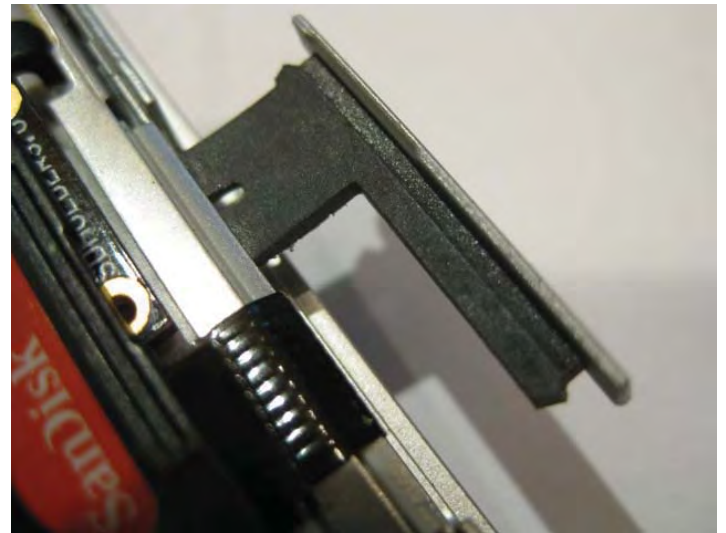
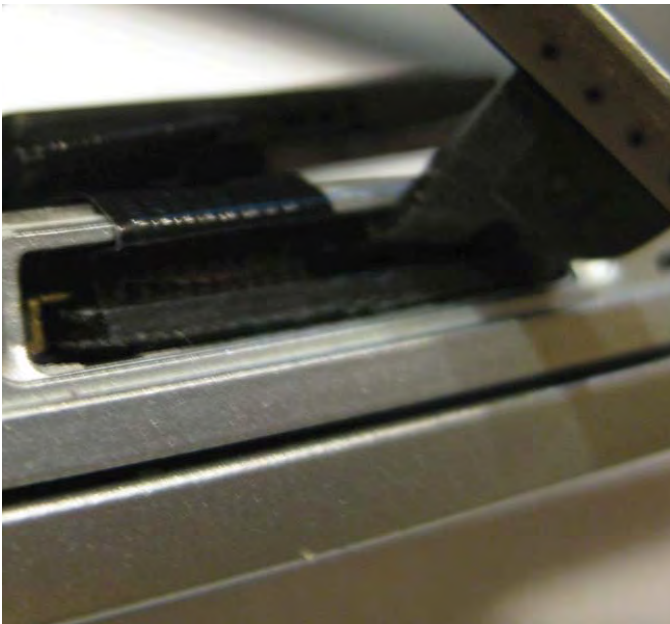
10. If it is done right it will allow the door to close very tight and keep the cable from being seen when the main battery cover is installed.



Notice how close the cable folds to the body of the tablet. This is very important for the little door to close properly

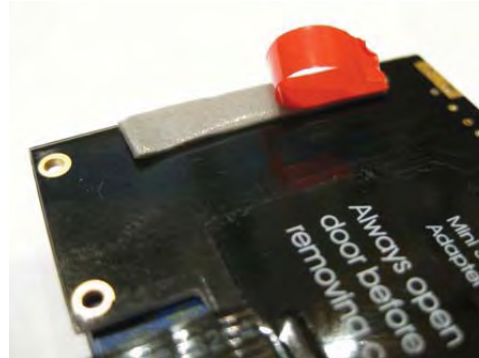


Also notice how the cable folds into the Mini SD slot to allow the extended part of this slot cover to go all the way in without hitting the cable. When the door is closed this fold will allow it to close tightly.



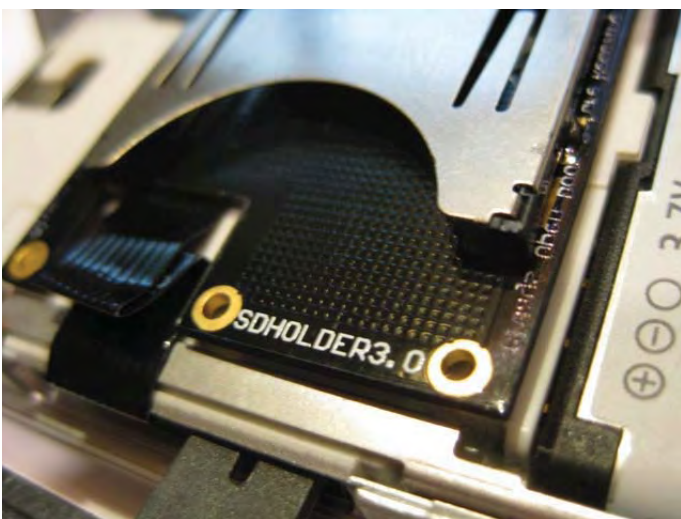
11. There are 2 more folds in the cable but they come at the end of the installation.

12. On the back of the adapter on one side is a strip of double-sided stick tape. This is important to hold the adapter securely on one side. The screw holds it on the other side. If the card is to be removed, the tape only on one side will make it easy to remove by folding it up from the screw side slowly.

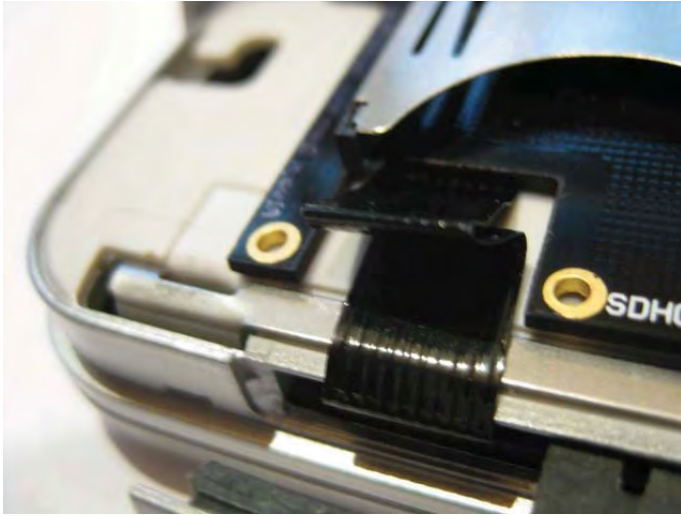


13. Remove the red non-stick part of the tape without removing the gray part from the adapter. Also do not let the sticky side touch anything until after the adapter and the screw has been positioned and started in the hole. This is just a little tricky since you must make sure the screw is centered over the screw hole before the tape sticks to the N810 body.

14. Use the next 4 photos to help you to determine where to place the adapter on the N810 back. Do not let the adapter extend over the sliding metal bar at the bottom. This is the bar that holds the rear cover in place. Once you are confident you know where to place it screw the screw in a little while keeping the tape from sticking. Then using the screw to help guide you stick the adapter to the N810 body.



15. If it is miss-aligned you will have to remove the screw right away and lift up the screw side slowly until the tape becomes un-stuck. If it remains on the tablet this is ok just put the screw in again and try the alignment again.



16. Once you are sure you have it aligned properly use the included black Philips screwdriver to tighten up the screw. Push down on the screwdriver slightly during the last few turns. Do not over tighten the screw. Tighten it just enough to where you think it will not come out again.

17. Now the only thing left is to fold the remainder of the cable so it is allow the door to close and the Full Size SD card to go in easily. It has a double fold in it like this photo below. It does not have to be laid completely flat. There is a slight angle to the last fold. This fold also allows for the slack that is needed to remove the mini SD connector from the Mini SD slot without removing the screw. I do not recommend doing this unless you have to. Bending the cable too many times will wear it eventually.



18. From the side the folds look like this (see photo above). Note how the fold around the N810 body from inside the Mini SD slot is close to the body. The other 2 folds are folded on top of each other. They do not have to be too tightly folded; just enough to be able to remove the SD card across the top of them. **Do not tape them down in any way.**

19. Now insert the Full size SD card, insert the battery and put the cover on the back. Do not close the mini SD card door until after the battery cover is on.



This is what the finished installation should look like

Close the mini SD slot door and install the metal cover.

20. Installing the metal cover. There is also a SD holder inside the cover to carry an extra card and to also hold the battery in place when the cover is installed. Each tablet we tested was slightly different so the cover may need a little moving to allow the latch to spring back but it should fit well. The latching tabs should not touch the SD adapter's PCB. If it does it can be bent carefully away just a little to clear the PCB but go into the locking holes on the slide rail. When bending the tabs be careful not to break the welds that secure them to the metal cover. A little movement is OK



Testing the Installation

After the power is up and the tablet settles, run file manager and if all is well the full size SD card should show up in the directory area.

If it does not show up make sure the door to the Mini SD is completely closed. If it still does not work then power off the tablet remove the cover, remove the SD card and check it in a computer to make sure it is working properly. Every card it tested so there should be no problems unless the black wire is damaged during installation.

***** When the tablet is powered on, before removing or installing the full-size SD card in the adapter always open the Mini-SD slot door like before but do not remove the Mini-SD adapter just open the slot cover. Insert or remove the Full-Size card then close the Mini-SD slot door for the tablet to recognize the inserted or removed card.*****

If you name your SD cards it will make it easier for you to keep up with them when they are installed in the tablet or if the tablet is connected to the USB port of a computer.

This is all it is to installing this adapter. There are now many full size SD cards you can use that are better, faster and cost less than Mini or micro SD cards.

If you have a mini SD card you want to use you must use a Mini-SD to Full-size Adapter.

Any problems contact us a cgraves256@optonline.net

Thanks again

